

# ClearTrack™ Fluids Hydraulic Simulator

The ClearTrack™ simulator enables our fluids experts to quickly and easily model fluid hydraulics in different operating conditions, formations, pressures and more. Resulting in fluids solutions that keep your operation on target for successful drilling, completion and stimulation.

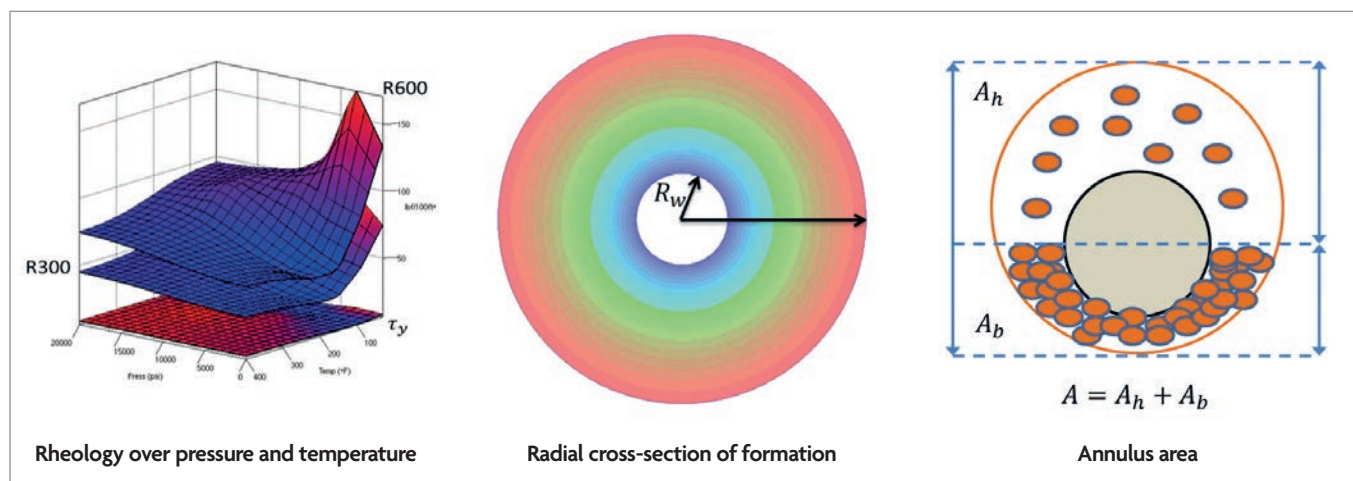
From drilling and tripping to hole cleaning and managing narrow pressure profiles in a variety of conditions – our ClearTrack fluids hydraulic simulator enables us to design and engineer fluid solutions that keep you one step ahead of your key drilling challenges.

But perhaps the most compelling reason to put your operational trust in ClearTrack is the unparalleled database of fluid parameters we have built into the software. Giving us the ability to model a vast array of scenarios with high levels of speed and accuracy. Including:

- Accurate ECD/ESD
- Hole-Cleaning
- Surge-Swab simulations with multiple flow-paths
- MPD (including Back Pressure and CML)
- HPHT Rheological Modeling with Field Calibration
- Temperature Modeling with time dependency
- Bridging calculator based on rock properties
- Parametric Optimization for various factors

## The main advantages of ClearTrack

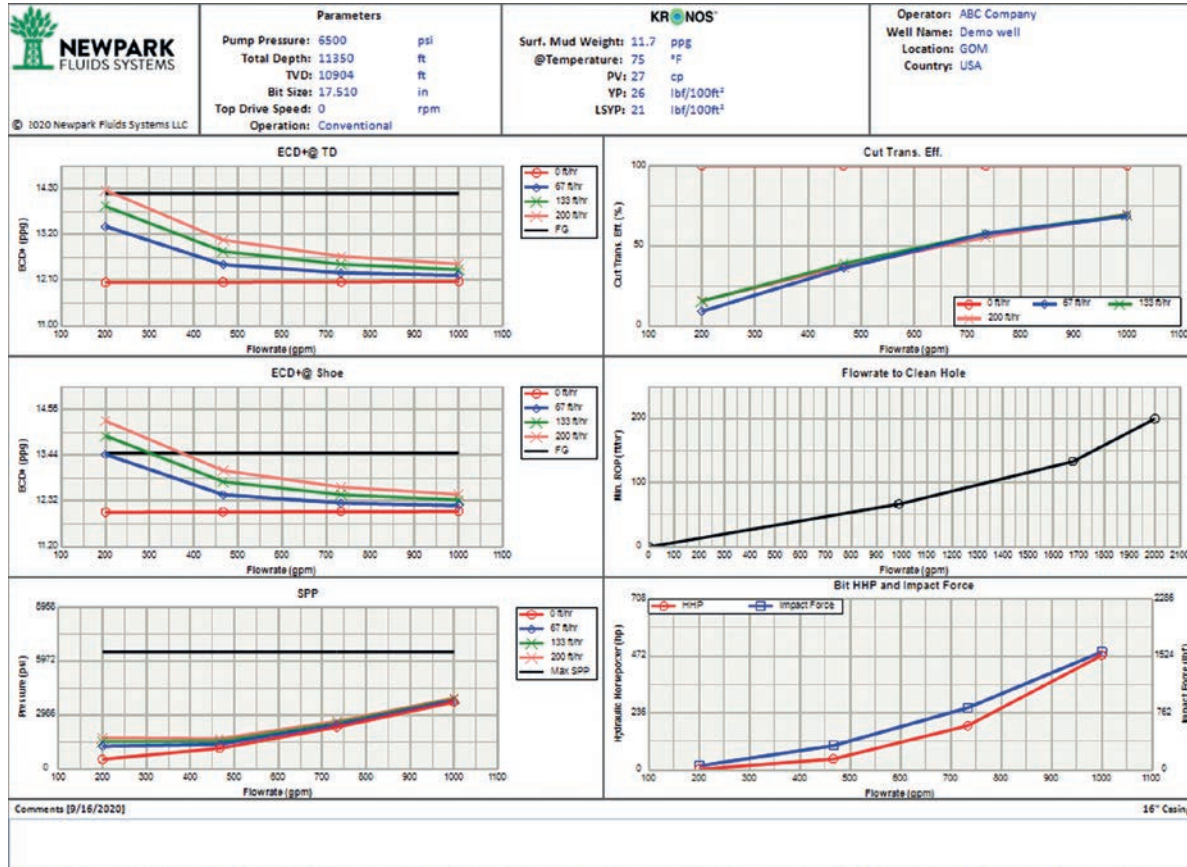
- **Accurately model downhole conditions** – Effectively predict the hydraulic and rheological behavior of the drilling fluids in even the most extreme downhole conditions.
- **Mitigate lost circulation** – Don't count the cost of avoidable lost circulation. We keep you on track in even the narrowest pressure profiles and tight drilling windows.
- **Minimize costs, maximize performance** – Get the most from your fluids investment by ensuring optimal performance in all conditions.
- **Make smarter decisions** – Intuitive and informative data visualizations give us the insight we need to make the right decision for your well.



## Proven in the field to optimize your operation

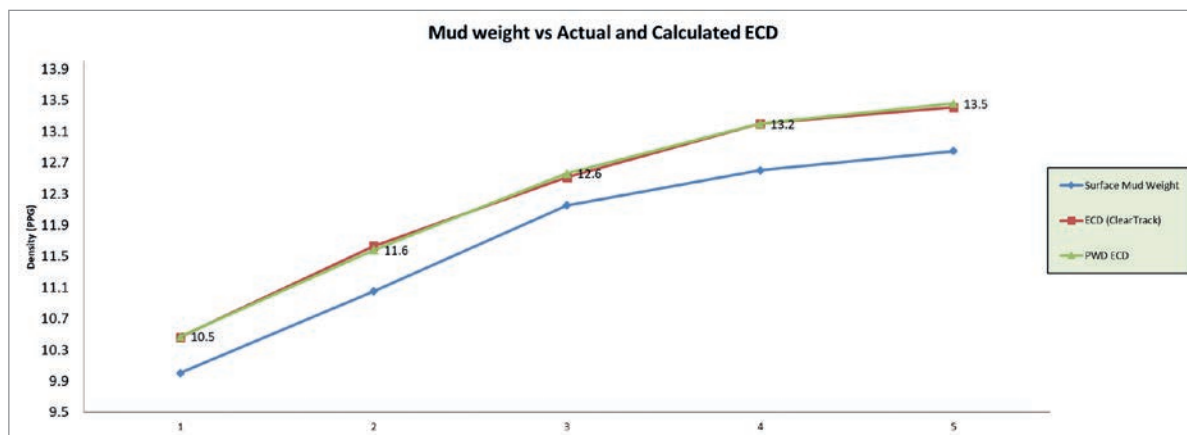
We know that no two wells are the same. Extensive modeling enables our expert engineers to fine-tune our fluids formulation to the exact specifications for your well. Ahead of time. While in-depth analysis of performance in the field allows for proactive, agile, adjustments during operations.

### Model key scenarios in the planning stage



\*The information in this report is based on our experience and represents our best judgment in the matter and is intended to be helpful, but we cannot assume responsibility for any loss or accident that may result from its use. Furthermore, nothing contained herein shall be construed as a recommendation to use any product in conflict with existing patents covering any materials or uses (ClearTrack 2020)

### Analyze planned vs. actual performance in the field



Contact Newpark fluids specialists for more information  
[nfs@newpark.com](mailto:nfs@newpark.com) or visit [newpark.com/fluids](http://newpark.com/fluids)

Newpark Fluids Systems, 21920 Merchants Way, Katy, TX 77449, © 2021 Newpark Resources Inc., All Rights Reserved.